

CALMING OUR COMMUNITIES

EXPERIMENTAL LABORATORY PROGRAM WITH ALLAN PARKER OAM

RECREATE REDESIGN OUR WORLD

THE NEXT EXPERIMENTAL LABORATORY WILL BE THE FIRST EXPERIMENTAL LABORATORY, WITH SPECIAL GUESTS TO BE STREAMED LIVE INTERNATIONALLY/VIRTUALLY/REMOTELY



**MARCH
30. 2020**



**EVERYONE
IS INVITED**



**NO COST TO ANYONE
AVAILABLE TO ALL**

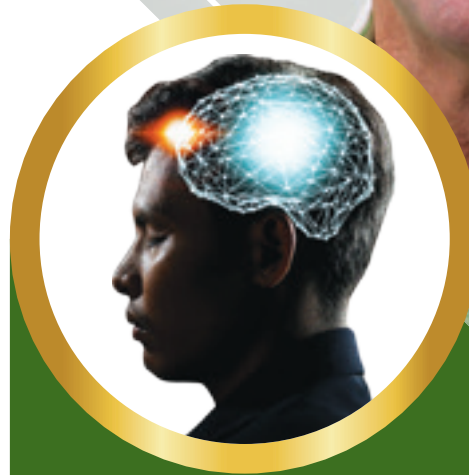
**START THE DAY BRIGHT BREAKFAST
FROM 7 A.M. AEST**



**EXPERIMENTAL LABORATORY
FROM 8 A.M. AEST**

REGISTER TODAY:

<https://calmingconversations.com/el-registration-30-march-2020/>



In these turbulent times, can I step into the eye of the cyclone? Or, alternately floating in the clouds above the cyclone watching what's going on and being free of the turmoil? Or, looking far enough ahead, to fore see how to stay out of the path of the cyclone? These are just a few of the Experimental Laboratory questions we will answer.

We are aiming to have over 500+ people online for the first EL on Monday. Please let the people you care for the most know that this is here for us all.



MORE FOR ALL PARTNERSHIP

Peak Performance Development Pty Ltd

📍 PO Box 7, Potts Point NSW 1335, Australia

📞 **+61 2 9331 7335**

✉️ frontdesk@peakpd.com

🌐 **www.peakpd.com**